



# CARPORT

LIQUIDATORS



**FREE DELIVERY**

**FREE INSTALLATION**

-  Metal Buildings
-  Metal Garages
-  Steel Carports
-  Commercial Buildings
-  Metal Barns
-  Metal Workshops



# CARPORT

LIQUIDATORS

# TABLE OF CONTENTS

	Page No.
About Carport Liquidators _____	1
<b>Metal Building Types</b>	
Metal Carports _____	3
Pavilion Carports _____	4
Metal Garages _____	5
Metal Buildings _____	6
Metal Barns _____	7
Commercial Buildings _____	8
RV Garages _____	9
Metal Workshops _____	11
Financing/RTO _____	12
Frequently Asked Questions (FAQs) _____	14
Installation Process _____	16
Metal Building Warranty _____	18
Service Area _____	19
Metal Building Features _____	20
Metal Building Accessories _____	22
100% Customer Satisfaction _____	24

## About Carport Liquidators

Not all steel buildings are made the same and neither are steel building companies. We broke the mold, that's why we stand out! Carport Liquidators offers top quality steel buildings, metal garages, Carports, RV covers and commercial buildings at low discounted prices, along with top notch customer service. Offering over 25 years' experience in the steel building industry, we know steel buildings, we know customer service and we know great value. When other steel building companies claim they offer the lowest price, we deliver on that promise with our Best Price Guarantee. We don't have the overhead other companies have due to high commissions paid to their salespeople. Instead we pass the savings on to you, the consumer.



## Why Choose Carport Liquidators?

Top quality metal buildings, top notch customer service and some of the lowest prices in the metal building industry. We work with a large network of top manufacturers in order to service the entire contiguous US and we manage your order from the time you purchase your building until it's installed. We believe in building relationships with our customers, we don't just hand you off like other companies do. After all, your happiness is our number one priority.

There are several reasons why you should choose Carport Liquidators for all your building needs.

## Top Quality Metal Buildings

We offer top quality metal buildings from some of the best manufacturers in the US. All heavy-duty galvanized steel construction along with the best warranties to back them up.



## Top Notch & Friendly Customer Service

While price is a very important factor when shopping for a new metal building, customer service is key as well. Most steel building companies manufacture their buildings to the same basic specifications, all things being equal, some just don't value their customers like they should. That's why we stand out!

## Low Prices

Carport Liquidators offers some of the lowest prices in the industry. Why pay top dollar for the same building you can get for hundreds, even thousands less? Why pay a salesman's commission when you can keep your money in your bank account.

In fact, if you have a competing exact apples to apples quote of a comparable building from another company that's priced lower than ours, send it to us and we'll match it.



## 100% Customer Satisfaction

We strive for 100% customer satisfaction for all of our customers. If you're not happy with the product or the service we've provided, we'll go the extra mile to make sure you are.



[CLICK HERE FOR MORE INFO](#)



# Metal Carports

Metal carports are an inexpensive way to protect your vehicles from harsh elements like the sun, rain, snow and hail. If a metal garage is beyond your means and you want to protect and prolong the life of your vehicles, a carport from Carport Liquidators is the right choice. All our metal carports are manufactured from galvanized steel which helps to guard against rust and extends the life of your metal building and come with various warranties that cover rust though, paint facing and workmanship issues, giving you peace of mind that your building will last for decades.



## Metal Carport Roof Styles

We offer 3 different roof styles to choose from depending on your budget, personal taste and the size of your metal carport.

### Regular Roof Carports

The most economical roof of the three different styles, the regular roof carport has horizontal sheeting that runs from end to end and has no overhang on the sides and rounded eaves. We only recommend this roof style for buildings up to 36' long and the regular roof carport is not available on metal carports that are over 30' wide.



### Boxed Eave Roof Metal Carports

Similar to the regular roof, boxed eave roof metal carports have horizontal sheeting that runs from end to end, that's where the similarities end. The boxed eave roof has, as the name implies, a boxed eave with a 6" overhang. This will give your steel carport a more traditional looking roof for a small difference in price. Selecting a boxed eave roof over a regular roof is just a matter of taste over budget.



### Vertical Roof Metal Carports

The best of the three different roof styles, the vertical roof, like the boxed eave roof, has a 6" overhang on the sides. But unlike the other two roof styles, the vertical roof has vertical sheeting that runs from ridge to eave. This roof style allows rain, snow and leaves to fall off the roof a lot easier down the sides, rather than accumulating on the carport roof. While this roof style is the most expensive out of the three, it is worth the additional cost due to its benefits. This roof style is also a must on buildings longer than 36' and is standard on all buildings over 30' wide.



**Selecting the roof style for your metal carport will be based on your budget, your personal preferences and the dimensions of your building.**

[CLICK HERE FOR MORE INFO](#)

# Pavilion Carports

Pavilion carports are designed with a more finished look than a basic carport. With sheeting on the sides and ends and frame outs creating the openings, the frames are hidden by the sheeting giving the building a more decorative look.

If you're looking for an outdoor shaded area but want the look of an enclosed building, the pavilion carport is the perfect solution. The sheeting, frames and trim of our pavilion carports are made of galvanized steel which helps guard against rust thereby extending the life of your metal building.



## Uses for Pavilion carports

While the primary use for our pavilion carports is to store and protect vehicles, they are very versatile and offer a variety of different applications. Some other uses are;



### Public Shaded Area

Public areas like parks, public pools and bus stops as well as areas in commercial complexes can always use shaded area to protect people and cars alike from the damaging sun, rain and hail as well as the cold snow. Our pavilion carports are the perfect solution. All of our pavilion carports are manufactured using only American made galvanized steel and come with a 20-year warranty so you're covered for any rust or corrosion.

### Picnic Table Cover

Pavilion carports are the perfect solution if you're looking for shaded area in your backyard. Our steel buildings are designed to keep the damaging sun and heavy rains off of your picnic table. Get relief from the hot sun with one of our steel pavilion carports designed to provide the shade you need in virtually any area on your property.



### Deck or Patio Cover

Our pavilion carports create the perfect shaded area for your deck or patio. If you want to be outdoors, but you're looking to stay out of the sun's harmful rays, a pavilion carport is the perfect solution. You can place a table and chairs underneath your pavilion carport creating a covered area so you can enjoy your meals outside al fresco style.

[CLICK HERE FOR MORE INFO](#)

# Metal Garages

Metal garages can be used for a variety of purposes and come in a wide range of sizes based on your needs. Whether you're looking to store your cars, trucks, motorcycles, RVs or motorhomes the possibilities are endless. Metal garage buildings are designed to last maintenance free for decades and come with warranties to back that up. Our steel garages can also be used as metal workshops or steel storage buildings. The applications are limitless.

## Strong and Durable

We offer metal garages of all different sizes and configurations. Whether you need a 2-car, 3-car or 4-car garage, we can design and build it for you.



## 1 Car Garages

If you're looking for an economical one car garage, we can design one for you. One car garages generally come 12 to 20 feet wide and 20 to 25 feet long. The roll up door size you need will depend on the size of vehicle you're planning on storing. For a regular car, an 8'x8' roll up door will suffice. If you're planning on using your metal garage to store a truck, you may want to go 10'x10' for additional clearance. Be sure to measure your vehicles width and height before purchasing your building to ensure that it will fit.

## 2 Car Garages

Two car garages generally start at a minimum of 22' wide and go up to 24' or 26' wide and up to 25' long. The width and length will depend on the interior space you need and the size of vehicles you are storing. The width and wall height will depend on the size of doors you need. The wall height will also depend on the interior storage required and if you plan on installing a car lift or not. If you're installing a lift, you'll want 12' to 14' high legs to ensure you have enough height.



## 3 Car Garages

If you need a 3 car garage, you will want to go at least 22' to 24' wide by 35' to 40' long with the roll up doors installed on the eave (long) side of the building. In this case, the width is actually the depth of your building. Some customers go a little longer to add a shop area or for storage.

[CLICK HERE FOR MORE INFO](#)



# Metal Buildings

There are a large variety of metal buildings available for consumers. Whether you're looking for metal carports, small metal sheds or large commercial buildings the selections are endless. And with sizes from as narrow as 12' wide up to 60' wide and virtually any length you need for whatever application you have in mind, there is a building for everyone.

## A Variety of Designs and Sizes

Carport Liquidators offers metal buildings of all sizes, designs and configurations. From small buildings used for workshops to large commercial buildings, whatever type of building you're looking for, we can have it built for you.



## 30x80 Steel Building with Wainscot

This 30x60 Steel Building with Wainscot comes with a vertical roof, and vertical walls. It has 4-8'x10' roll-up doors with 45-degree Dutch corners, 1-10'x12' roll-up door with 45-degree Dutch corners installed on the end of the structure, and 2 windows. This building is extremely durable and can be certified for up to 180mph winds and 90psf snow loads. The walls are Pewter Gray with Black Wainscot, the roof is Black and the trim is Pewter Gray & Black.

## 30x100 Steel Building

This 30x100 Steel Building has 2 walk doors with diamond windows, 4-30'x30' windows and 3-10'x10' frame outs with 45-degree Dutch corners. One end of the building has 20' of open area with no wall sheeting. This structure has a vertical roof and can be certified for areas that require it due to heavy snow or high winds.



## 46x25 Custom Steel Building

This 46x25 Custom Steel Building can be certified for high wind loads and heavy snow loads. It features 1-10'x12' roll-up door, 1-8'x8' roll-up door, and 1 walk door with diamond window. The building comes with a Black roof, Cardinal Red walls with Black Wainscot, and Black trim.

[CLICK HERE FOR MORE INFO](#)

# Metal Barns

Carport Liquidators offers top quality metal barns, steel AG buildings, metal horse barns, as well as Carolina and Seneca barns at rock bottom prices with we have dozens of designs available for you to select from. If none of our designs are what you're looking for, we can modify one to your liking or we can design and build your metal barn based on your own layout. The choice is yours.



## Types of Metal Barns & Steel Ag Buildings



### Metal Carolina Barns

Carolina barns are the most popular barn design, which is most recognized by farmers and non-farmers. These metal barns are made of up of 3 buildings connected together as one metal barn. A center building, which is taller than the other buildings and a lean-to on either side. This type of metal barn is also called a monitor style barn and raised center barn.

### Steel Seneca Barns

Seneca barns are similar to Carolina barns, except instead of the roof of each lean-to on the sides dropping down a foot or two, the roofs are a continued extension of the roof on the main center building.



### Steel Horse Barns

If you're looking to house just a few horses, or a few dozen horses we can accommodate you. We offer horse barns of all sizes and design.

[CLICK HERE FOR MORE INFO](#)

# Commercial Buildings

Commercial Metal Buildings are used for many purposes and Carport Liquidators offers a variety of commercial buildings that can be used for any application. Whether you need a warehouse, a large storage building, a machine shop, a large commercial garage, or an industrial warehouse, the uses are endless. Below are some examples.



## Commercial/Industrial Applications

The applications for clear span metal buildings in the commercial and industrial sectors are endless. Whether you're using it for storage purposes for industrial equipment, manufacturing, office space, warehouse and distribution, refrigeration and cold storage, or research and development we have the building to suit your needs. Carport Liquidators offers buildings up to 60' wide, 20' high and up to any length required. Along with the flexibility in dimensions, the fact that there are no support columns or posts in the center allows for complete flexibility in interior design and allows for many different commercial uses.

## Warehouse/storage applications

Since warehouse space typically requires large open spaces, the clear span design of our commercial metal buildings is the perfect solution for those looking for warehouse or storage applications. If you're looking for a metal building to store large equipment, for boat storage, RV storage, or any type of warehouse application, our commercial steel buildings are a perfect fit.



## Commercial Garages

Our standard clear span commercial garages start at 32' wide and go up to 60' wide. If you're looking for something wider, depending where you are building, we can accommodate up to 80' wide for your specific use. Our clear span buildings are flexible in design, no matter how many cars you may be looking to store.

[CLICK HERE FOR MORE INFO](#)

## RV Shelters & RV Garages

Millions of American each year set out travel in their RV across the country. While their RVs spend a lot of time on the road, they need a place to be stored when they're not being used. Leaving your RV outside when not in use exposed to the sun, rain, snow and other natural elements, can be disastrous to the motorhome's paint and finish. This is why a quality metal RV shelter or RV cover from Carport Liquidators is critical in keeping your RV in tip top shape, leaving it in virtually new condition throughout its lifetime.



Carport Liquidators offers a wide range of RV garages and RV shelters for all types and sizes of motorhomes. Whether you're looking for a fully enclosed RV garage or just a roof only RV Shelter, we've got the building for you.

### RV Shelters & RV Covers

RV shelters, or RV covers are a more economical way of storing your RV and protecting it from the paint damaging sun. These are typically just the roof only and have no sheeting on the walls. Optional sheeting down each sidewall offers more protection for a reasonable cost. RV Shelters & RV Covers Roof Style Options We offer 3 different styles of roofs for your preference and budget. Regular Roof RV Shelter



### Regular Roof RV Shelter (Roof Only)

The basic regular roof is the least expensive and offers horizontal sheeting and a rounded eave with no overhang. This roof type is fine for buildings up to 36' in length.

### Regular Roof RV Shelter (Enclosed)

With our regular roof RV Shelter, you can opt to enclose the sides and ends. The building pictured here has both sides and one end enclosed and includes gable only sheeting on the other end wall.



## RV Shelters & RV Garages

### Boxed Eave Roof RV Shelter

The next level up is a boxed eave roof. This roof type also has horizontal sheeting, but what sets it apart from the regular roof is that it has a 6" overhang on each side. This is an upgraded roof and can be selected for a small fee.



### Commercial RV Shelter (Enclosed)

Our Commercial RV Shelters are available in widths from 32' wide up to 60' wide and in any length. They come standard with a vertical roof and vertical wall sheeting and the framing and base rails are doubled up for additional support.

### Vertical Roof RV Garage (Fully Enclosed)

The third roof style is the vertical roof. This roof has sheeting that runs vertically from the peak of the roof down to the eaves. The design of this roof allows rain snow and leaves to fall off the sides much easier, which helps to prevent build up and damage from heavy snow. This type of roof is highly recommended for RV shelters up to 36' long and almost mandatory for RV garages over 35' long.



[CLICK HERE FOR MORE INFO](#)

# Metal Workshops

If you need a metal workshop building installed on your property, we have metal buildings that will meet all your needs. Whether you plan on using it to work on your cars, painting, woodworking or just general tinkering around, our steel buildings are the perfect solution for what you need. Carport Liquidators' metal buildings offer the durability and quality you're looking for in a metal workshop building and we offer a variety of different sizes and dimensions.



## Top Quality Metal Workshops

Our metal workshops are manufactured using only top-quality US galvanized steel. Designed to stand up to all types of weather, our certified buildings can handle some of the heaviest snow loads and highest wind loads. With options like heavier gauge sheeting and heavier gauge framing, we can design a metal workshop that is the right fit for your needs and your budget.

## Metal Carport Building Specialists

Our employees are experts in the field of metal workshops and other types of steel buildings. With over 25 years' experience in the steel building industry, we can walk you through every step of the process from selecting the correct building dimensions, choosing the right door sizes and locations and even the best building colors based on your requirements. We service most of the 48 contiguous US states and are familiar with the permit process where it's applicable.



## Metal Workshop Customization

Metal workshops from Carport Liquidators are completely customizable to meet your needs, preferences and budget. Select from widths up to 60', any length and walls up to 20' high. You can also choose from a myriad of options including roll up doors, walk doors and windows to accessorize your steel building.

[CLICK HERE FOR MORE INFO](#)

# Financing

Arranging financing with Carport Liquidators for metal garages is a simple process. We have relationship with different finance companies that offer different programs to meet your needs. Whether you're looking to finance just the metal building or the entire project including the concrete and any other options you plan to add, we can find the program that's right for you. We have programs that offer up to \$65k that can be approved within minutes.

Because we have relationships with different finance companies that offer different options, we can find the perfect program that works for you.

## There are many benefits to allowing Carport Liquidators to arrange the financing for your metal building.



### Flexible Payment Options

We offer financing from 12 months up to 72 months depending on the amount you're financing, your credit score and how much you're looking to pay monthly.



### Quick approval times

Depending on the program you're interested in, we can get you approved within minutes.



### Finance up to \$65k

Whether you're looking to finance just the building, or the entire project including the concrete, electrical and other options, we have programs that offer up to \$65k in financing.



### Pay off your loan at any time

Some programs allow you to pay off your loan in full prior to the maturity date without any penalties.



### Commercial/Industrial/ Agricultural

We offer financing for not only residential buildings, but commercial, industrial and agricultural buildings as

[CLICK HERE FOR MORE INFO](#)

## Rent To Own (RTO)

Carport Liquidator's offers easy Rent-to-own (RTO) financing if you're looking for a quick and easy way to get one of our metal garages installed on your property. For those who don't quite have the money or credit to purchase a garage, but can afford the monthly payments, our RTO program allows you to get one of our steel buildings with little down and no credit check. Our steel garages RTO program offers easy and affordable monthly payments that fall within your budget.

### Benefits of Our Rent-to-Own Program



#### No Credit Check

Unlike traditional financing, with rent to own there is no need to check your credit to get approved.



#### Same Day Approval

RTO offers same day approval. With traditional financing, you sometimes have to wait days to see if you're approved.



#### Small Down Payment

All is needed is a small down payment to own your new garage. The rest is paid in monthly installments.



#### Flexible Terms

Choose from a 24-month, 36-month or 48-month term for your RTO financing. This flexibility allows you to lower your payments or pay your loan off quicker.



#### Pay Off at Any Time

You can pay your RTO loan off at any time throughout the term.



#### Low Monthly Payment

Because Carport Liquidators offers some of the lowest prices of metal buildings in the industry, this means that the RTO monthly payments are some of the lowest as well.

### Purchasing a Building Through Our RTO Program is as Easy as 1-2-3

**Step 1** – Find the metal garage building you want installed on your property. You can select from one the many metal buildings on our website, or if you have a custom metal building design in mind, contact us to get a price.

**Step 2** – Once you have a price for your metal building calculate your monthly RTO payment. You can do this by using the RTO Payment Calculator on our website:

**Step 3** – Once you are ready to place your order, contact your Carport Liquidators representative at 1-800-818-4048 to order your building and place your deposit. We will then send you all the documentation with the RTO terms for you to sign.

You can now enjoy the benefits of owning a metal garage building without having to lay out a lot of money!

[CLICK HERE FOR MORE INFO](#)



# Frequently Asked Questions (FAQs)

## What size buildings do you offer?

Our standard buildings dimensions are available starting at 12' wide and going up to 60' wide and in any length you need. Standard widths are in 2' increments starting at 18' and standard lengths 5' increments starting at 20'. Heights start at 5' and go up 20' based on certain building widths. We can, however, design a building for you based on any width up to 60' wide and unlimited length. Note: When you see measurements like 21' long, 46' long, 101' long, etc. this is the roof length. The roof is 1' longer than the building frame due to the 6" of overhang on each end.



12x30 Steel Storage Building



60x200 Steel Building

## Do You Have Standard Sizes Available?

Yes, we do. You can take a look through our website to see different sizes available or contact one of our Building Specialists to get more information.

## Can You Build a Custom Building Based On My Layout?

Yes, we can. If you have a design in mind, please send it to us so we can give you an estimate. You can also take one of our standard designs and customize it to your specifications. You can change door sizes and locations, window locations, building colors, as well as the building dimensions.



46x25 Custom Steel Building

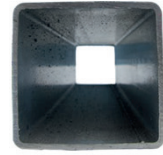


24x25 Custom Metal Building

## Frequently Asked Questions (FAQs)

### What's The Difference Between 14-Gauge and 12-Gauge Steel?

The difference is the thickness of the steel and the diameter of the tube. While 14 gauge is a thinner steel, the frame is 2 1/2" x 2 1/2". 12 gauge is a thicker steel, but the frame is 2 1/4" x 2 1/4", smaller than the 14 gauge frame. Some manufacturers only offer a warranty on 12 gauge, while others offer a warranty on both 14 and 12 gauge. 14 gauge is the industry standard for tube frames and 12 gauge, though not really required, is generally used where the snow loads are heavier.



### What is The Difference Between Your Three Roof Styles?

The Regular roof has rounded eaves with no overhang on the sides and horizontal sheeting that runs from end wall to end wall.

The Boxed Eave roof has a squared eave with a 6" overhang on the sides and horizontal sheeting that runs from end wall to end wall.

The Vertical roof has sheeting that runs vertically from the ridge down to the eave. Vertical roofs are standard on buildings over 30' wide and on building longer than 35' (36' for roof only buildings), we automatically upgrade the roof to vertical in order to avoid any leaking in the future.



Regular Roof



Boxed Eave Roof



Vertical Roof

### What is A Certified Metal Building?

A certified building is one that has been designed by an engineer to meet certain wind and/or snow loads. If you're building in an area with high wind loads, or heavy snow loads, this is something that is either required by your local building department, or just good sense for where you are building. Additional framework, trusses, braces and anchors are added to strengthen the building to meet those heavier loads. You're urged to contact your building department to verify the load requirements in your area.



[CLICK HERE FOR MORE INFO](#)

# Installation Process

Before the installation of your metal garage building you must be sure that your pad is level and ready for your building. This means that your concrete is set, asphalt is in place and the ground is cleared of any debris that may interfere with the installation of your metal building.

The installation process starts the moment the installers inspect your building site and unload the building materials.

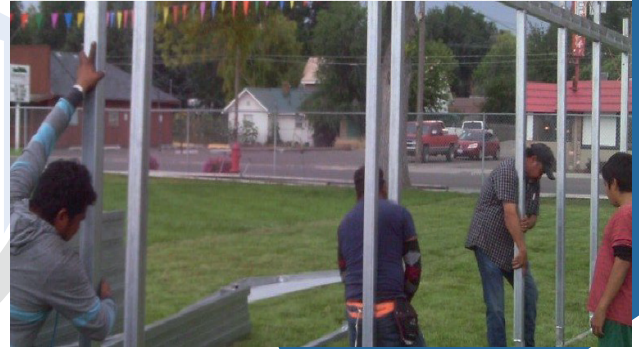


## Step One - Level Pad / Base Plate Installation

The first step is the process of anchoring the baseplate into your foundation. The base rails are the steel frames that run the entire outline of the building. Once the building is laid out, the base rails are secured to the foundation. Anchors are inserted through the base rail and drilled into the pad.

## Step Two - Installing The Frames

The next step is installing the frames of your building. The frames are made up of the legs, which are the upright supports that attach to the bows or trusses, depending on the width of your building. The frames are assembled on the ground and then raised up and put into place. There are sleeves on the base rails into which the legs are set and then fastened. Each frame is then assembled and installed in its own sleeve.



Note: For buildings over 30' wide or with legs over 14' high (12' high in some areas), you will be required to supply a reach lift for the installation (shown on the left). This is due to the size and weight of each frame. The reach lift should generally have a reach capacity of 26'.



## Installation Process

### Step Three - Roof & Wall Sheeting and Insulation

Once all of the frames are assembled, put in place and secured to the base rail the next step is to install the roof & wall sheeting. The roof sheeting is installed first followed by the wall sheeting.



### Step Four - Roll Up Door Walk Door, Window & Frame Out Installation

The installation process starts the moment the installers inspect your building site and unload the building materials.

### Step Five - Cleanup

The final step is for the installation crew to clean up any scrapmetal or debris left over from the installation. This includes sheeting or framework that was cut on site, as well as anyscrews, bolts and any debris and voila, you have a brand new, beautiful steel garage building installed on your property within a matter of a few hours or days, depend on the building size.



[CLICK HERE FOR MORE INFO](#)

# Metal Building Warranty

We want every one of our customers to be 100% satisfied with their metal building purchase. In order to ensure this, each top-quality metal building that Carport Liquidators sells is protected by a manufacturers' warranty.

Depending on the manufacturer supplying your metal building, they may offer some or all of the following warranties:



## Workmanship Warranty

This covers any issues with the materials or the installation. If there are any defects in the materials, whether it be scratches, dents, blemishes, etc. that affect the cosmetic appearance of your building we will replace the materials at no cost.

Issues covered by the workmanship warranty include;

- ✓ Problems or defects due to the manufacturing process
- ✓ Problems or defects in any of the building components
- ✓ Problems or defects due to the installation process

If there is an issue with any aspect of the installation or building materials, we will have the crew sent back out there to repair it to your satisfaction at no additional cost to you.

## Frame Warranty

Carport Liquidators' manufacturing partners offer up to a 20-year rust through warranty on the framework. This warranty varies between manufacturers and is available on both 14-gauge and 12-gauge frames depending on the manufacturer. If the frame rusts through, thereby threatening the structural integrity of your building, the factory will replace the materials at no cost to you.

## Sheeting Warranty

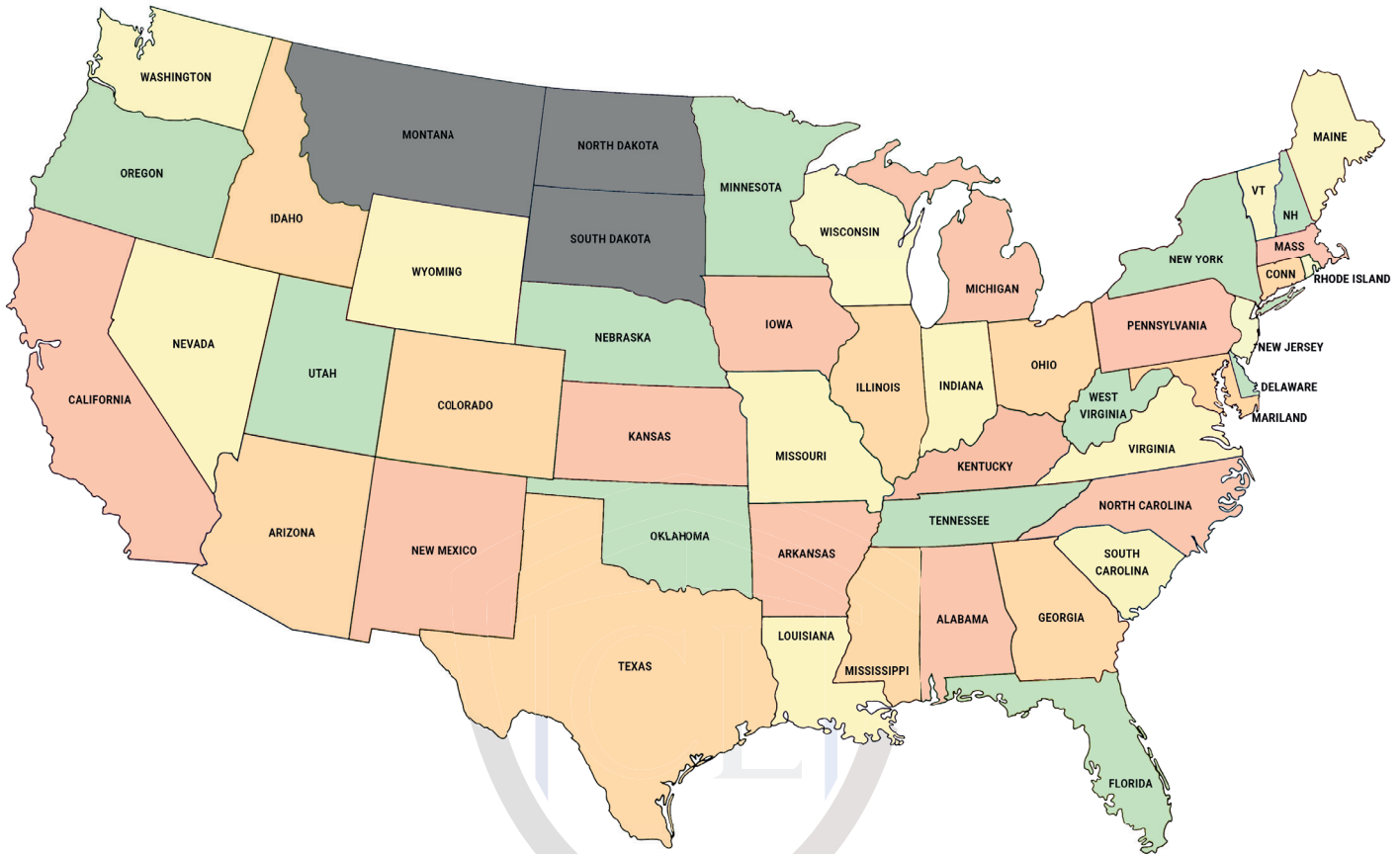
Some manufacturers offer up to a 20 year warranty on the metal sheeting (Walls, roof and trim) against paint fading or rust through under normal wear and tear.

\*Length of any specific warranty varies between manufacturers.  
Please contact our office for details.

[CLICK HERE FOR MORE INFO](#)

## Service Area

Through our network of factories nationwide Carport Liquidators is able to service most contiguous US states. Those states we do not service are Montana, South Dakota and North Dakota. The map and list below show which states we service.



### We Service 46 States in the Continental US

Alabama	Iowa	Nevada	Tennessee
Arizona	Kansas	New Hampshire	Texas
Arkansas	Kentucky	New Jersey	Utah
California	Louisiana	New Mexico	Vermont
Colorado	Maine	New York	Virginia
Connecticut	Maryland	North Carolina	Washington
Delaware	Massachusetts	Ohio	West Virginia
Florida	Michigan	Oklahoma	Wisconsin
Georgia	Minnesota	Oregon	Wyoming
Idaho	Mississippi	Pennsylvania	
Illinois	Missouri	Rhode Island	
Indiana	Nebraska	South Carolina	

[CLICK HERE FOR MORE INFO](#)

# Metal Building Features

## Roof Styles

Carport Liquidators offers 3 different styles of roof systems for metal buildings; Regular, Boxed Eave and Vertical.

### Regular Roof (Standard)

The regular roof comes standard on all metal buildings up to 30' wide. It features rounded eaves with no overhang on the sides and a 6" overhang on each end and horizontal sheeting that runs from end to end.



### Boxed Eave (Optional)

The boxed eave roof is a slight upgrade from the regular roof. The only difference between the boxed eave roof and the regular roof is the boxed eave roof features a 6" overhang on each side. The overhang gives the boxed eave roof a more traditional look.

### Vertical (Optional)

The vertical roof features vertical sheeting that runs from the ridge (Center) to the eaves and is the most expensive of the 3 roof styles as it requires hat channels that run down the length of the building in order to hold up the vertical roof sheeting. This type of roof allows rain, snow and other debris to slide off the sides much easier, thus reducing build up and clutter.



## Wall Sheeting Configuration

Standard wall sheeting featured on our metal buildings up to 30' wide is horizontal (Below on the left).

Vertical wall sheeting is an optional upgrade on metal buildings up to 30' wide and is a standard feature on commercial buildings over 30' wide.

### Horizontal Wall Sheeting

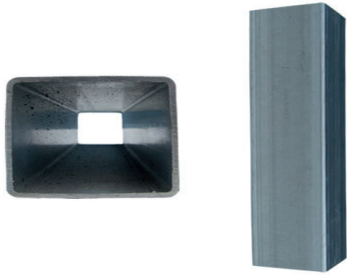


### Vertical Wall Sheeting



## Roof & Wall Sheeting Gauge

Standard sheeting for the roof and walls is 29-gauge galvanized steel. Upgraded 26-gauge galvanized steel is available in most areas for an additional fee. The panels are 3' wide and come in various lengths, including 21', 26', 31' and 36'.



## Frame Gauge

The frame for our metal buildings is manufactured using a standard 14-gauge galvanized steel tube, while a 12-gauge galvanized steel upgraded tube is available for an additional fee.

## Roof Frame Type

The framing type will vary depending on width of the building and the manufacturer. The wider the building the more reinforced the truss must be to support the weight with the most complex truss coming with buildings over 30' wide. The trusses featured on buildings over 30' wide vary between the different manufacturers due to each factory's own engineering requirements and design specifications.

### Bow - 12 to 24' wide



Regular Roof



Boxed Eave/Vertical

### Truss - 25 to 30' wide



Regular



Boxed Eave/Vertical

### Commercial Truss - 31 to 60'



Vertical Roof (Standard)

[CLICK HERE FOR MORE INFO](#)



# Metal Building Accessories

Carport Liquidators offers a variety of options and accessories for your metal garage building.

## Walk Doors

Our walk doors are a standard 36"x80" and are available with and without a window.

Other sizes available, depending on where you are building;

32"x72"    34"x72"    36"x72"



## Windows

Carport Liquidators' windows are 30"x30" and are single hung with a screen.

Other sizes available, depending on where you are building;

24"x36"    30"x27"    30"x36"    36"x36"

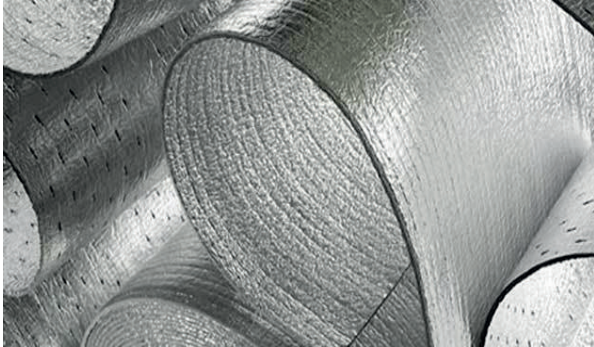
## Roll Up Doors

Our roll up doors are available from 6'x6' up to 20'x18'. Doors up to 10'x10' are typically pushed up or pulled down with the use of a cord. Doors larger than 10'x10' will come with a chain hoist. However, this varies between manufacturers.



## Insulation

Our insulation is a vapor barrier and is designed to help reduce condensation build up. It's available for just the roof or for both the roof and walls.



## Skylights/Wall Lights

Skylights and wall lights are a great way to allow natural light into your building during the day without the use of electricity. The skylights some manufactures offer, come in various sizes:

3'x4'    3'x6'    3'x10'

Please note that not all manufacturers offer skylights or wall lights, so they are not available in all service areas.



[CLICK HERE FOR MORE INFO](#)

# 100% Customer Satisfaction

At Carport Liquidators, we want each and every one of our customers to be 100% satisfied with their new metal building and with their experience with us. Whether you're building a metal garage building, a commercial building, a workshop, an RV shelter, or a carport, your satisfaction is our number one priority. This is why we have a 100% customer satisfaction policy.



**Our 100% satisfaction policy means that you are satisfied with every aspect of your new metal building, including the following:**

- ✓ Initial contact with us
- ✓ Initial metal building purchase process
- ✓ Initial metal building quote process
- ✓ Communication with us throughout the project from start to finish
- ✓ Communication with the factory throughout the project from start to finish
- ✓ Timeline for drawings (if applicable)
- ✓ Timeline for installation/Installation process (was the installation crew
- ✓ courteous and efficient?)

If you feel that we fell short on any of the above items please contact us immediately at **1-800-818-4048** and allow us the opportunity to rectify any issues you have. We are always looking for ways to improve the products we sell and the customer service we provide in order to ensure that our customers are 100% satisfied. We appreciate any input you may have, positive or negative. Please see our **Terms of Use** page for more information on our 100% Satisfaction policy.

**[CLICK HERE FOR MORE INFO](#)**



# CARPORT

LIQUIDATORS



**FREE DELIVERY**

**FREE INSTALLATION**



 **1-800-818-4048**

 **[www.carportliquidators.com](http://www.carportliquidators.com)**